

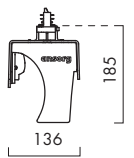
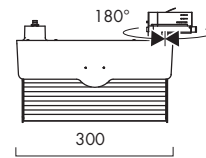
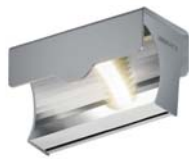
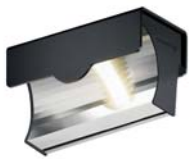
# Spotlights

## NAVO NSW



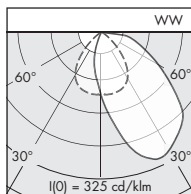
- Wallwasher
- Lighting technology LED
- For three-circuit track
- With integral reflector WW
- Connection data: 220-240 V, 50/60 Hz
- DALI control system is possible
- Weight approx. 2.1 kg
- Colours: white/anthracite/silver

IP20



Photometric data	CRI	Lumen category	P <sub>system</sub>	Efficiency	Reflector
	Light colour				
	830	4000 lm	<b>32 W</b>	130 lm/W	WW
		6000 lm	<b>47 W</b>	130 lm/W	
	840 927	Photometric data on request			

The photometric values are standard values and refer to the entire luminaire.  
In the case of CRI ≥ 90 the efficiency is approx. 10-15 % lower.



### Planning information

